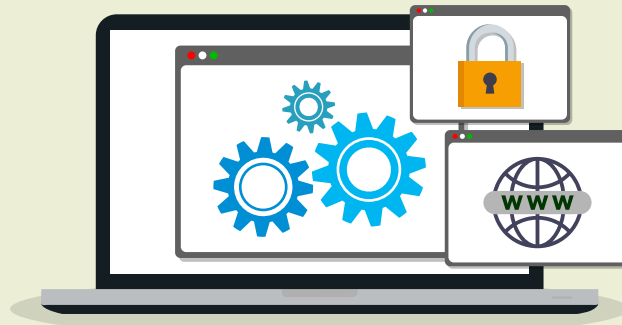


Impact of Information Security Policy on Password Sharing in Work Environments: A Simulated Study

With the growing number of employees that require remote access, enhanced cyber security and IT protocols are needed to protect information assets



Researchers compared the effectiveness of an organization's ethics code and information security policy in reducing the risks of cyber security breaches



Simulated study among 85 accounting students



Participants working on loan application worksheets



Reminders to participants about:

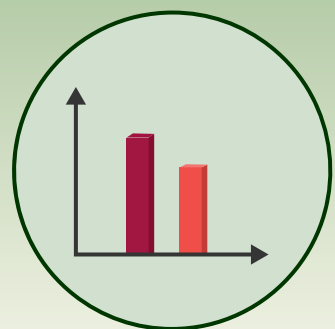
- Organizational information security policy
- Code of ethics



Trusted assistants requested participants to share passwords for sensitive information



Statistical analysis



The probability of password sharing was lower with reminders about information security policies than with the code of ethics



Participants did not distinguish between password types when sharing

Organizations can improve their cyber security by strengthening information security policies

Would You Give Me Your Password?

Du et al. (2022) | *Journal of information systems* | DOI: 10.2308/ISYS-2021-019

<https://publications.aaahq.org/jis/article-abstract/36/2/17/97/Would-You-Give-Me-Your-Password>



American Accounting Association

Thought Leaders in Accounting